

Fatra Root barrier is a mechanical barrier designed to direct and block the horizontal growth of the roots of trees, shrubs and perennial plants. It protects building structures, utility networks and the surrounding environment from unwanted root penetration.

Applications of the Root Barrier:

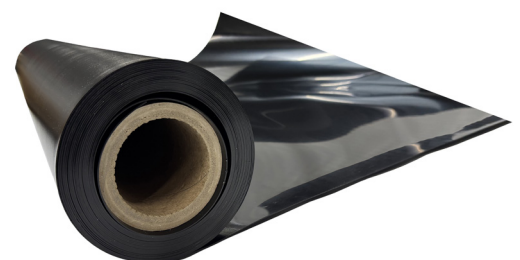
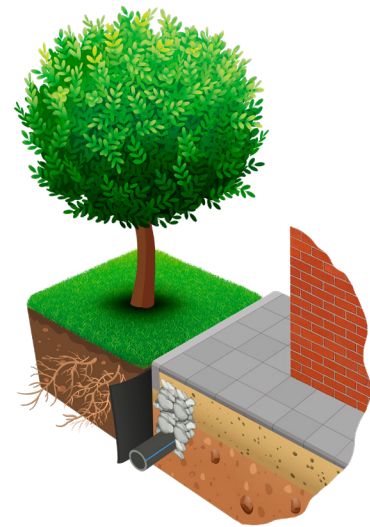
- Protection of roads (sidewalks, roads, paths)
- Protection of building foundations, basements and retaining walls
- Protection of water structures (swimming pools, ponds, reservoirs)
- Protection of engineering networks and technical structures
- Use as a hidden garden curb

Product advantages:

- Prevents roots from growing through the soil
- Protects construction and transport objects against damage by roots
- Thanks to the material used, it has a long service life
- Easy to handle and can be adjusted as needed
- It is resistant to mold, fungi and microorganisms
- Environmentally friendly - does not contain any hazardous chemicals

Properties

Material		polyethylene (HDPE)
Color		black
Surface	variant 1	smooth on both sides
	variant 2	patterned on both sides
Density	EN 1849-2	0.935 - 0.950 g/cm ³
Thickness		1 / 1.5 / 2 mm
Roll width		30 – 150 cm
Roll length		up to 200 m



Feel free to contact us for more information or a specific offer.